

LIDAR - Effektive Umwelterfassung

VDV-Symposium zum Autonomen Fahren

28. August 2020

Johannes Thein

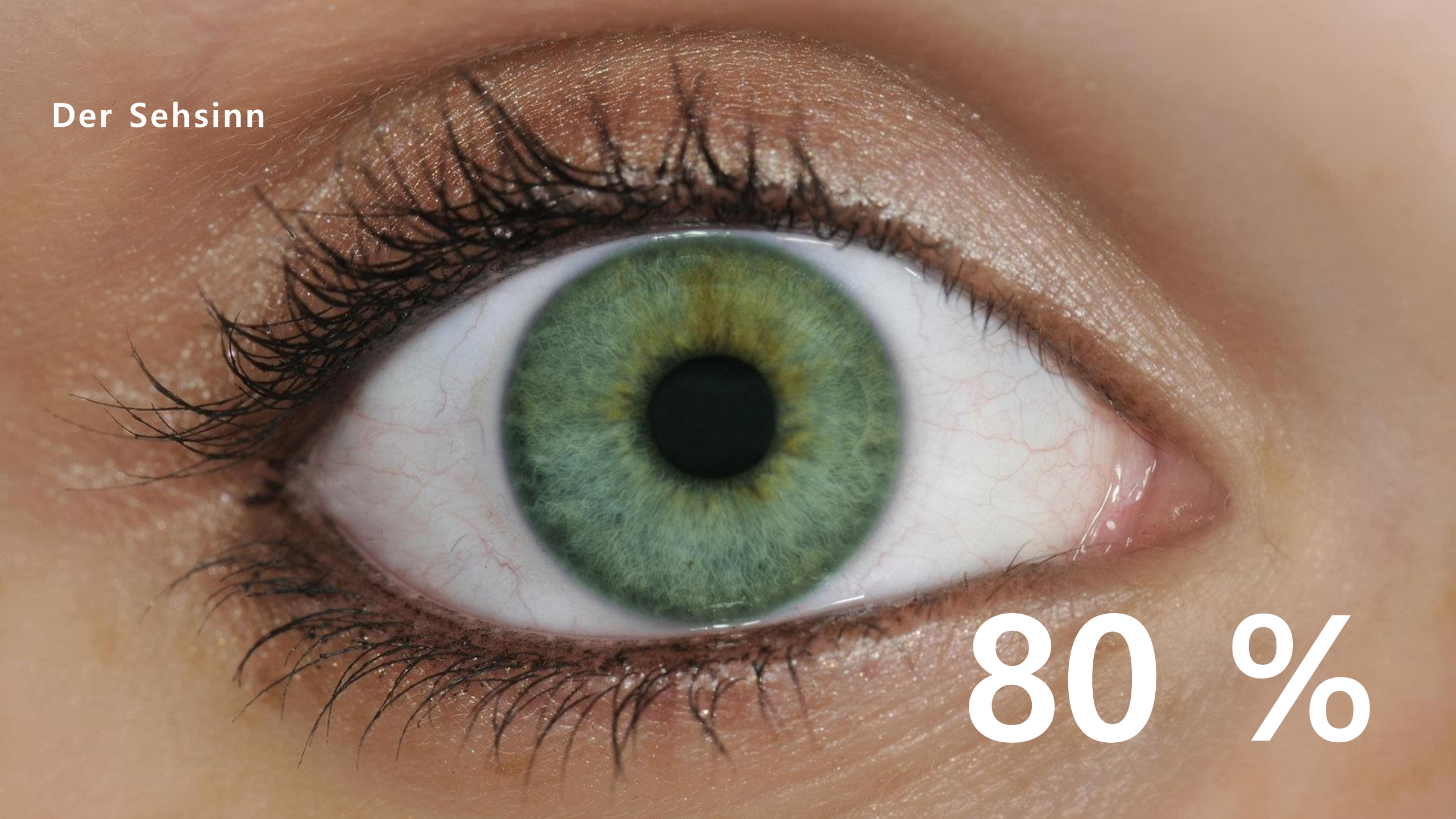


Blickfeld

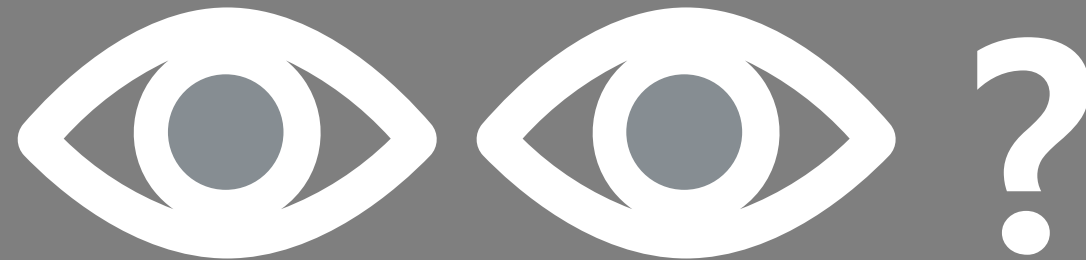
LiDAR / scan your world

Der Sehsinn

80 %



Autos mit Augen



Blickfeld auf einen Blick

Team



2017
gegründet



München



Team von
120+

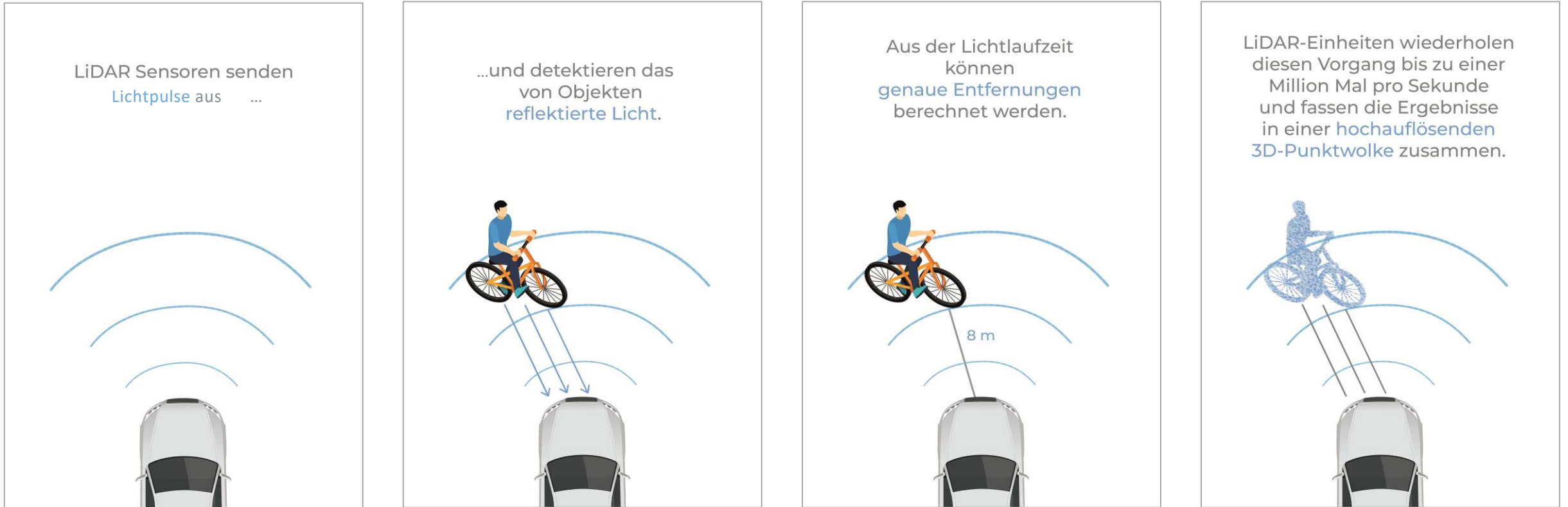




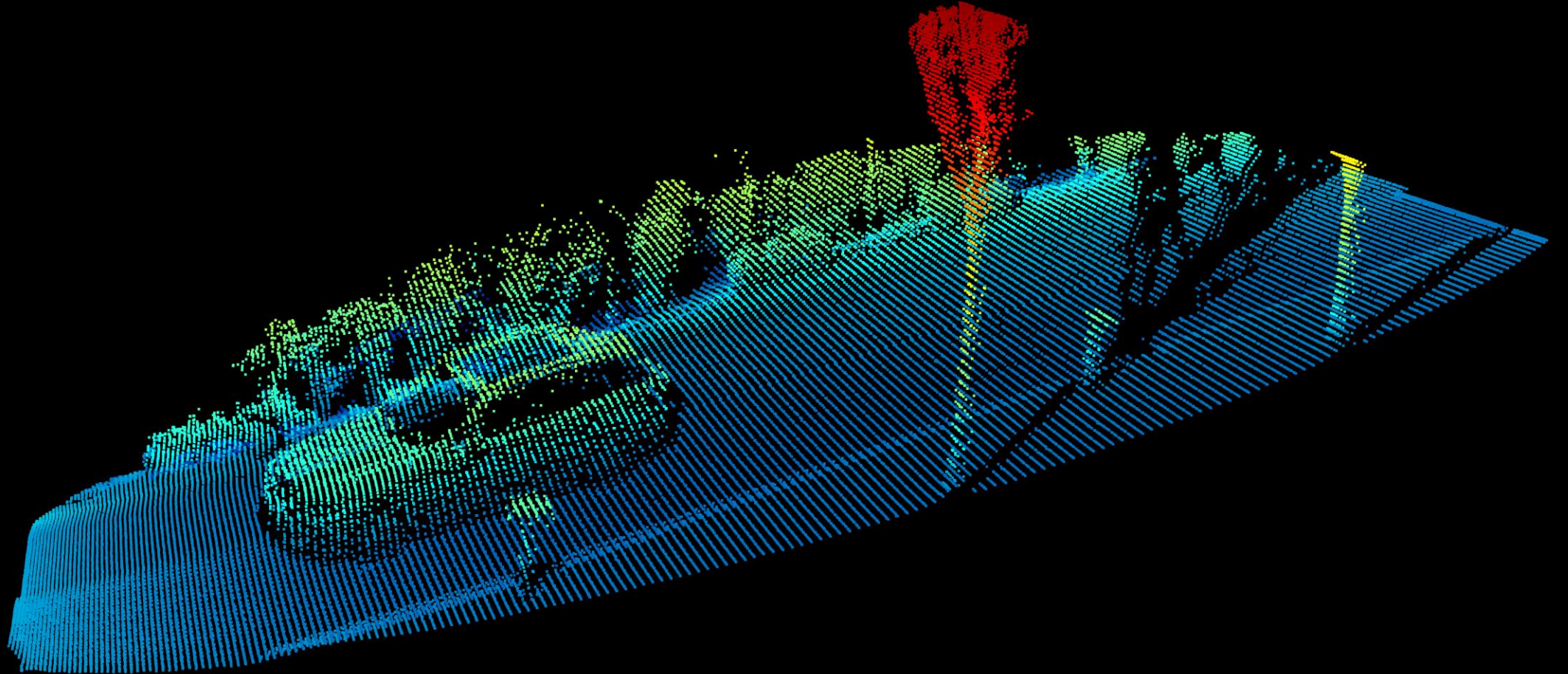
Warum brauchen wir LiDAR?

Wie funktioniert LiDAR?

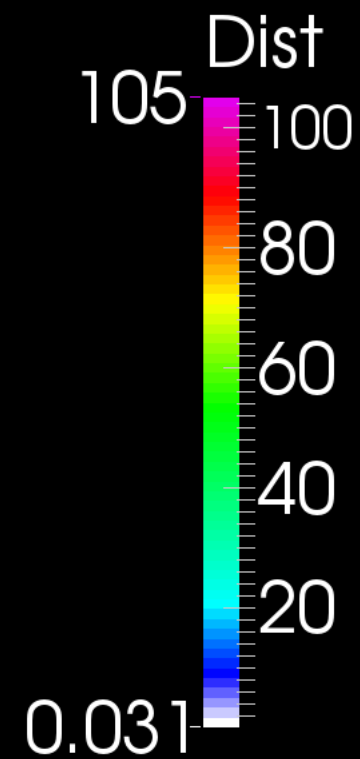
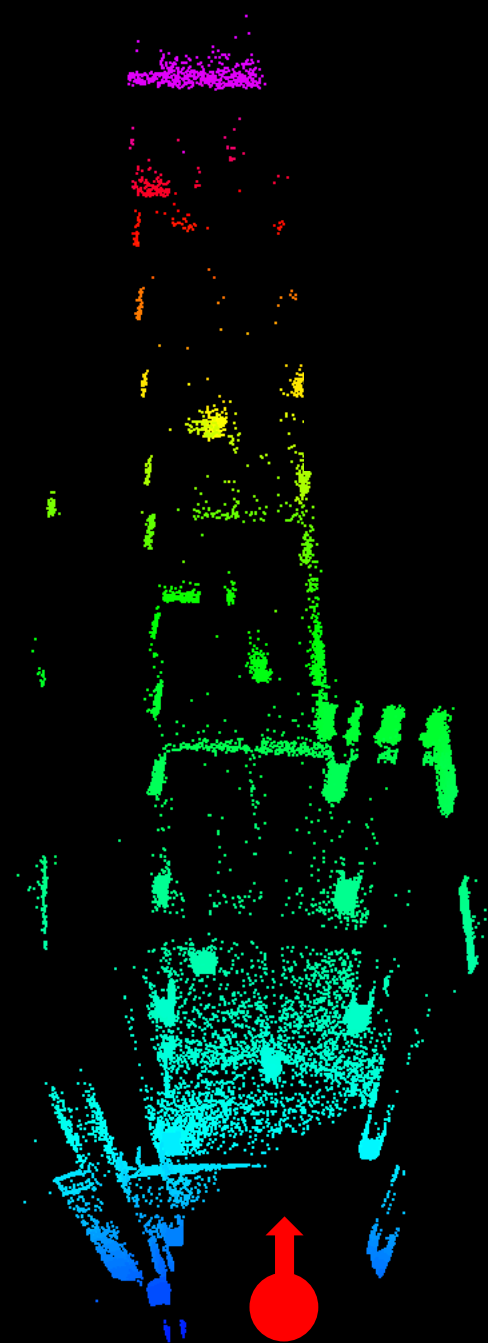
LiDAR (Light Detection and Ranging) - Das Prinzip der Laufzeitmessung

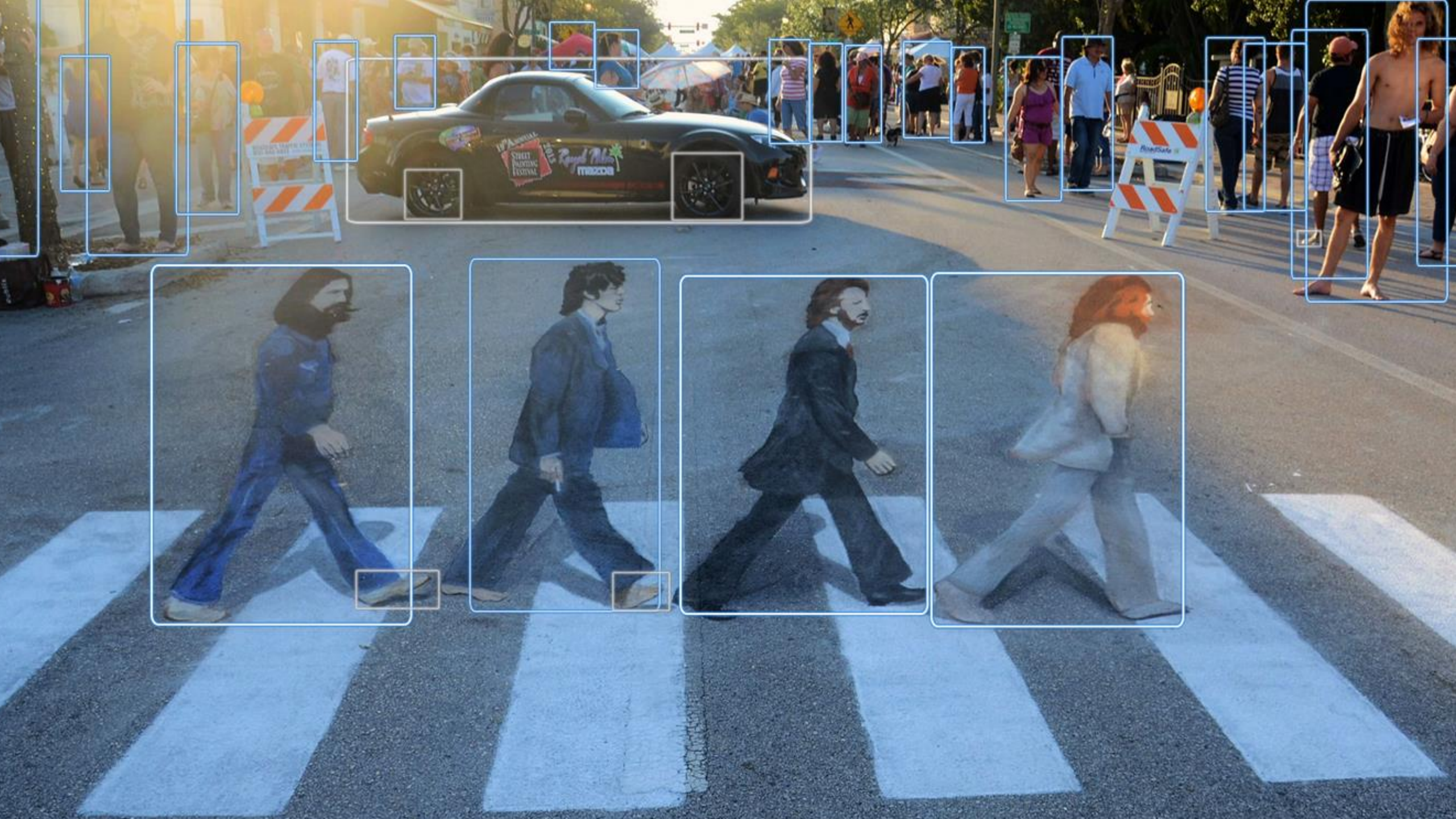


3D Daten - Punktwolken



Exakte Distanzbestimmung mittels 3D-Daten





Einsatz im Fahrzeug



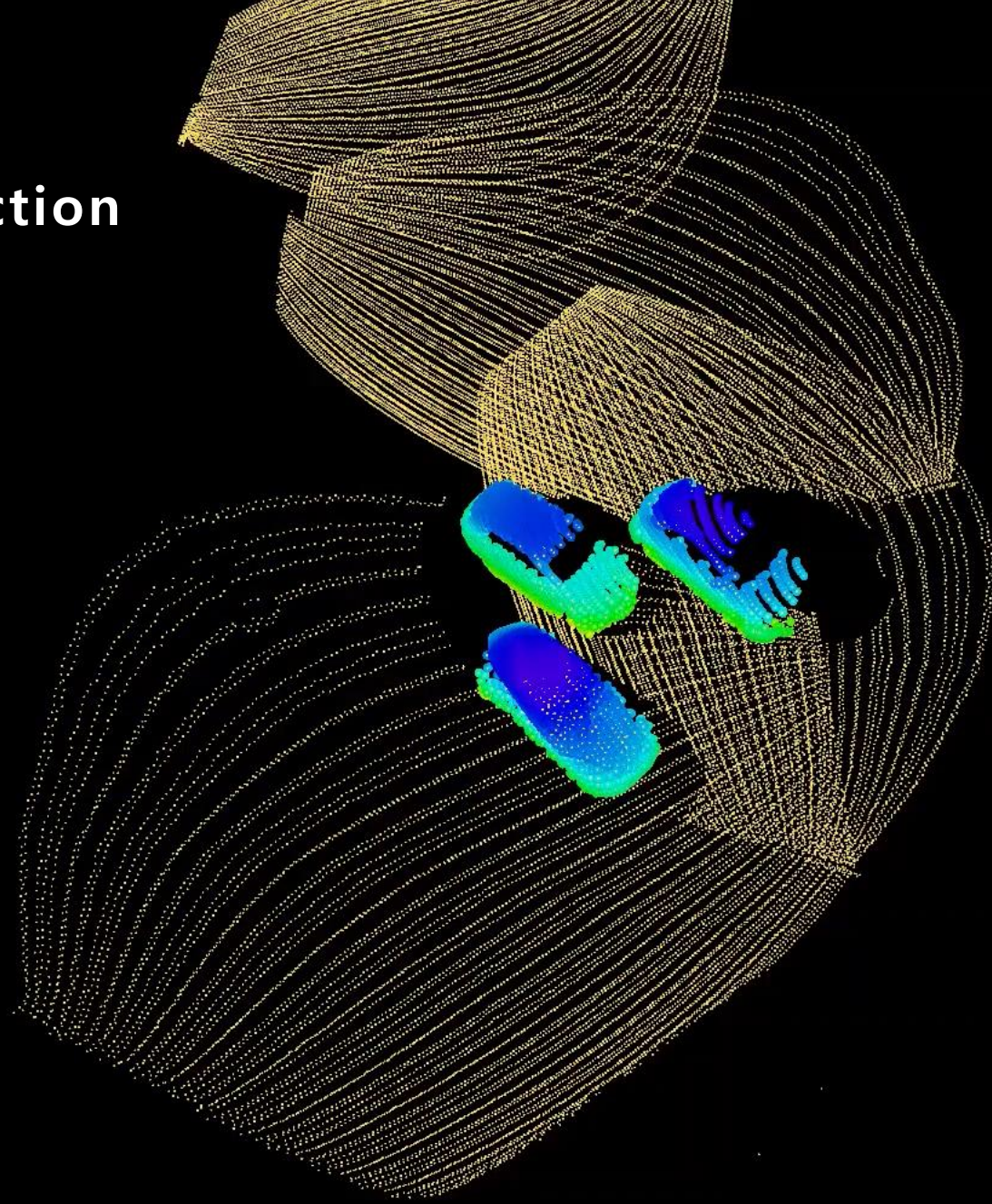
Blickfeld
LiDAR / scan your world



Parking Spot Detection



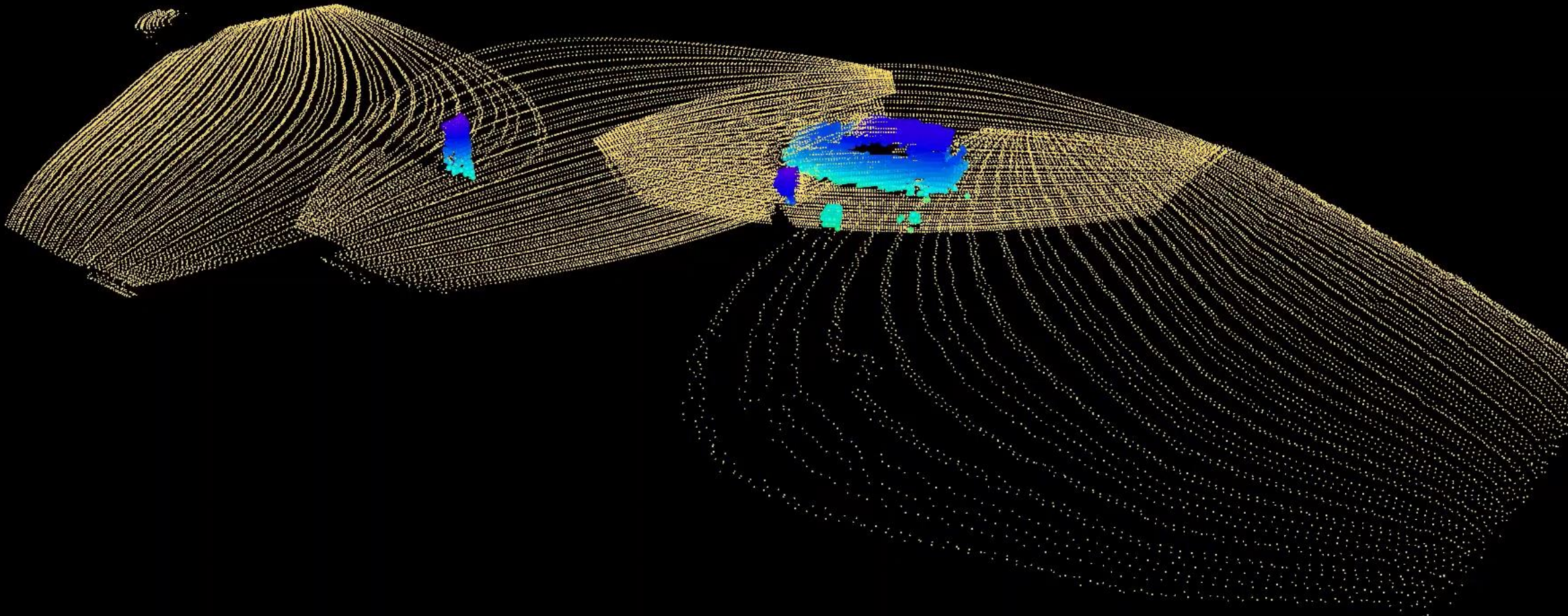
Parking Spot Detection



Valet Parking



Valet Parking



An aerial photograph of a city street intersection. A yellow, semi-transparent LIDAR scan area is overlaid on the road, highlighting a specific section. The scan area is roughly rectangular and follows the road's path. Several cars are visible on the road, some of which are highlighted with yellow bounding boxes. The surrounding area includes buildings, sidewalks, and trees. The text "Smart City" is in the top left, and the "Blickfeld" logo is in the bottom left.

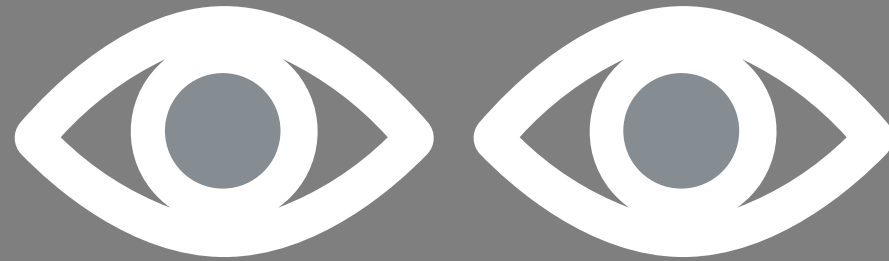
Smart City

Blickfeld
LiDAR / scan your world

Logistik - Volumenbestimmung



Autos mit Augen





／ Johannes Thein
／ johannes.thein@blickfeld.com
／ www.blickfeld.com



Blickfeld
LiDAR / scan your world